

PRICE 25 CENTS

SOUVENIR
OF THE



PAN
AMERICAN

EXPOSITION

BUFFALO 1901

OVER ONE HUNDRED VIEWS

Showing the Grandeur of the



PAN-AMERICAN EXPOSITION

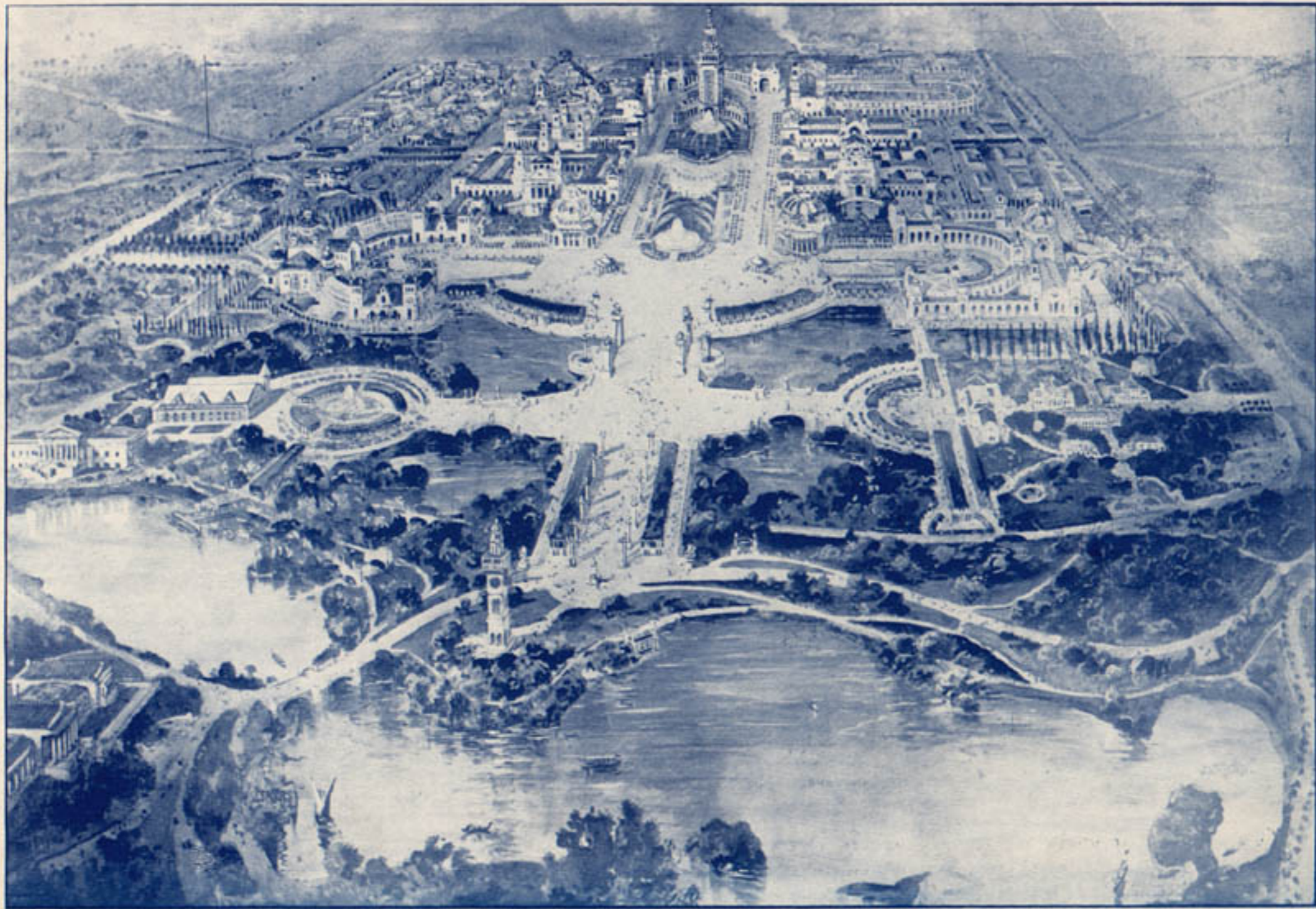
BUFFALO, NEW YORK—1901

Published and Copyrighted August, 1901, by Chas. J. Shults & Co. All Pan-American Building designs in this publication are copyrighted by the Pan-American Exposition Co. All other contents covered by the publishers' copyright.



THE HEADS OF ALL DEPARTMENTS.

- | | | |
|---|---|--|
| 1. Wm. A. Coffin, Director of Fine Arts. | 13. John M. Carrere, Chairman Board of Architects. | 24. Frank A. Converse, Supt. Live Stock and Dairy Products. |
| 2. Major Alger M. Wheeler, Supt Mfrs. | 14. Hon. Wm. I. Buchanan, Director-Gen. | 25. Frederick W. Taylor, Supt. Horticulture and Food Products. |
| 3. P. J. Murphy, Chief of Construction. | 15. David T. Day, Supt. of Mines and Metallurgy. | 26. A. M. Benedict, M. D., Supt. Ethnology and Archaeology. |
| 4. James V. Mahoney, Supt. Pass'r Dept. | 16. Hon. John G. Milburn, President. | 27. George L. Williams, Treasurer. |
| 5. Edwin Fleming, Secretary. | 17. Samuel J. Fields, Chief Engineer. | 28. John V. Noel, Chief Latin-American Press Section. |
| 6. Karl Bitter, Director of Sculpture | 18. John N. Scatcherd, Chairman Executive Committee. | 29. C. Y. Turner, Director of Color. |
| 7. Roswell Park, M.D., Medical Director. | 19. Rudolf Ulrich, Landscape Architect. | 30. Francis Almy, Purchasing Agent. |
| 8. Thomas M. Moore, Supt. Graphic Arts, Machinery, Transportation, Exhibits and Agricultural Implements | 20. Selim H. Peabody, Supt. Liberal Arts. | 31. Hon. John Weber, Commissioner-General and Auditor. |
| 9. Newcomb Carlton, Director of Works. | 21. Henry Rustin, Supt. Mechanical and Electrical Bureau. | 32. Mark Bennett, Supt. Press Departm't. |
| 10. Luther Stieringer, Consulting Eng'r. | 22. Henry Weatherwax, Chief Draught'n. | 33. W. E. Cash, Supt. of Admissions and Collections. |
| 11. George Francis Sever, Supt. Electrical Exhibits. | 23. Bruce Ellis, Supt. Freight Department. | |



BIRD'S-EYE VIEW, SHOWING GROUND PLAN OF THE EXPOSITION.



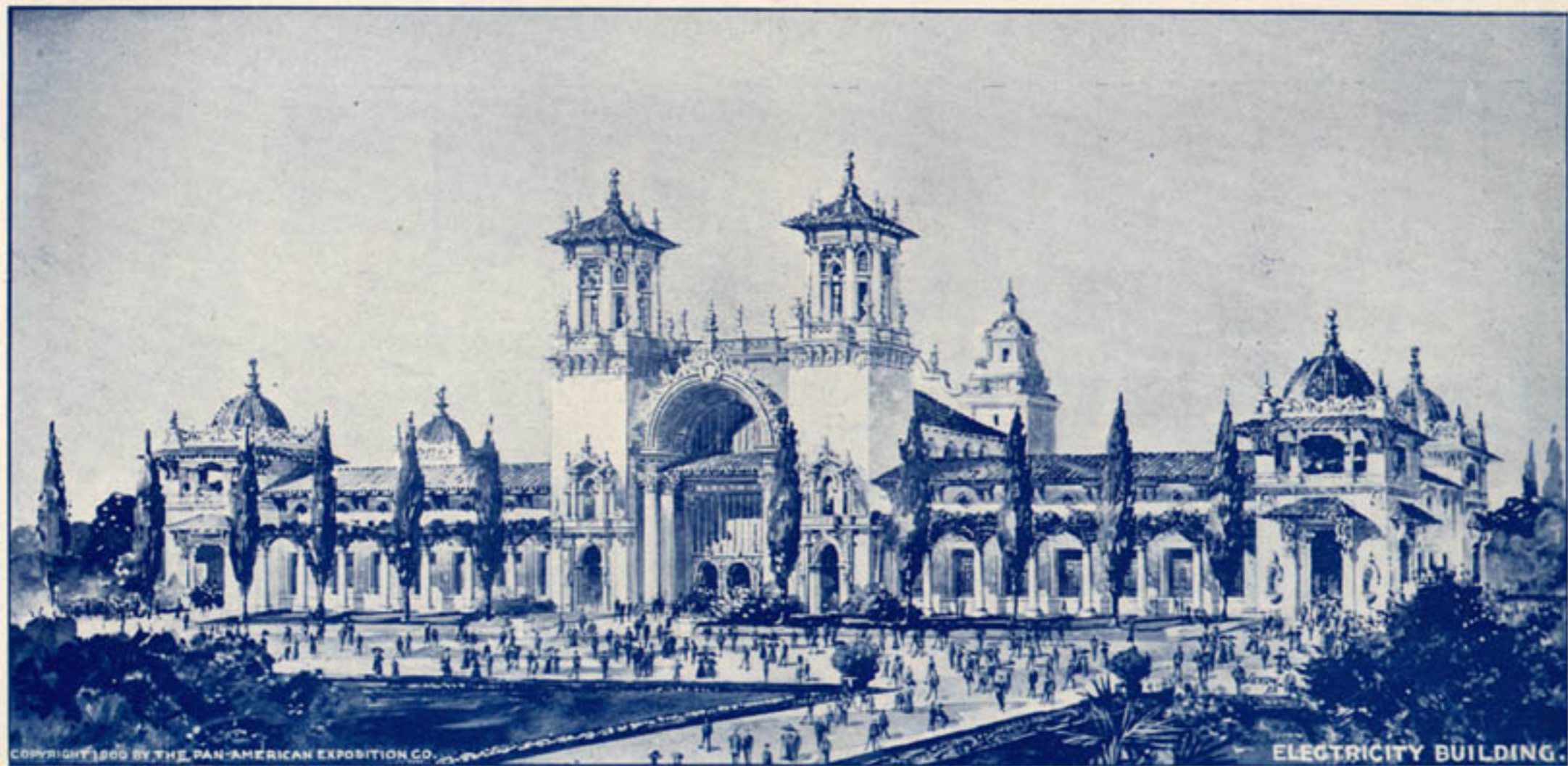
The new granite bridge over the neck separating the Park Lake from the North Bay in Delaware Park was built by the City of Buffalo at a cost of \$50,000. It is 138 feet long, with a roadway 53 feet in width, and two footpaths, each 11 feet wide. It is in the form of three arches. For the purpose of the Exposition each of the Americas is represented by an arch, and it has been given the name of the Bridge of the Three Americas.



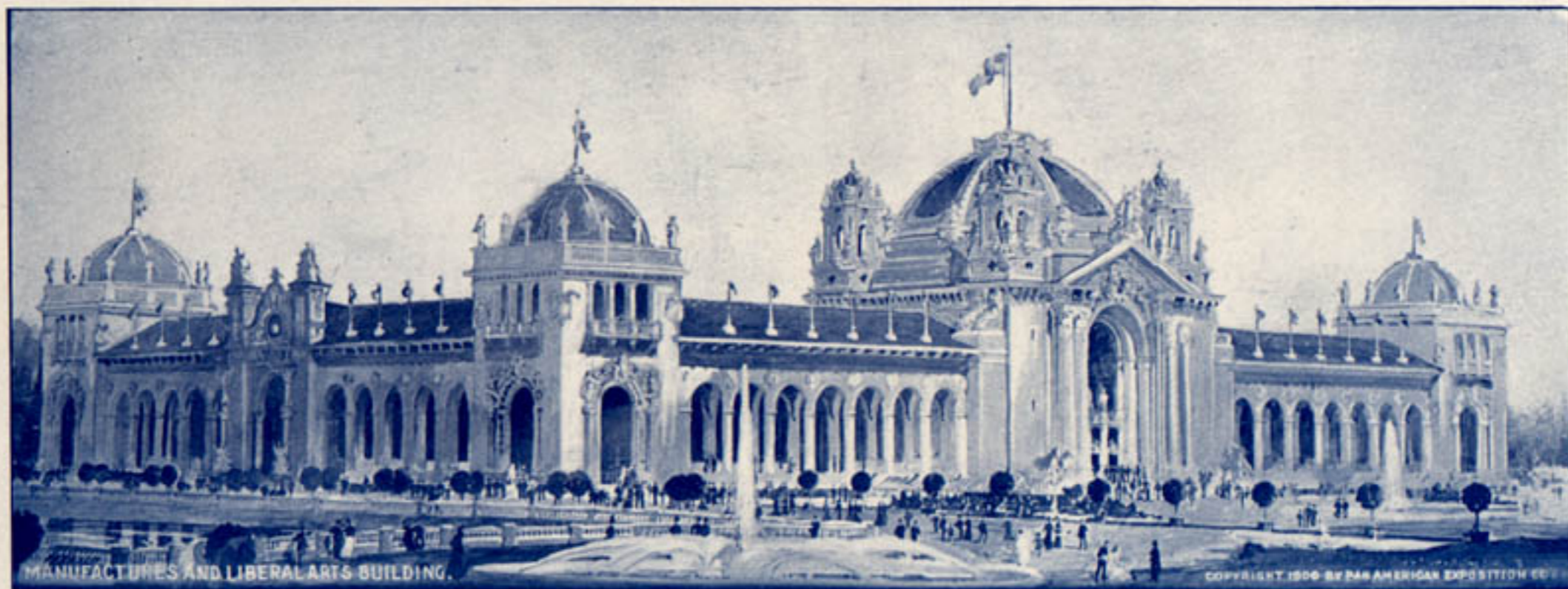
The Service Building was the first structure erected on the Exposition grounds. It is the administrative headquarters of the Exposition, all of the officers whose presence is required upon the grounds having their headquarters there.



The Machinery Building covers an area of about four acres, and contains a very wonderful display of modern machinery of American invention, showing the progress that has been made within the last few years. The transportation exhibits include all of the very latest specimens of road vehicles, automobiles, cars and railroad appliances.



Electricity Building 500 x 150 feet. In this building is shown the largest display of electrical machinery and appliances ever presented. Contains plant for distribution of Electric Power for Exposition, and the Commercial and Historic Exhibits in Electrical Arts.



The Manufactures and Liberal Arts Building covers more than four acres, and contains the very latest productions of the mills and factories of the United States and other countries of the Western Hemisphere. Exhibits showing the processes of manufacture constitute a very interesting feature of this division.



The Plaza is an open space immediately north of the Electric Tower, and is 350 feet by 500 feet. On the east side is the large entrance building of the Stadium, and on the north the Propylæa, a section of which is shown in the illustration. On the west is the building for restaurant purposes, forming also the eastern entrance to the Midway.



The Ethnology Building is circular in form, standing at the junction of the Court of Fountains and the Esplanade. The exhibits relate particularly to the Ethnology and Archaeology of the Western World. A living exhibit of the Six Nations is given under direction of this division, and there are also full size representations of pre-historic mounds.



TEMPLE OF MUSIC.

The Temple of Music is one of the most beautiful of the Exposition buildings. It provides an auditorium with a seating capacity of 2,200, and contains one of the largest and finest pipe organs ever built in the United States.



COPYRIGHT 1900
BY

UNITED STATES GOVERNMENT BUILDING

THE PAN-AMERICAN
EXPOSITION CO.

The United States Government expended \$500,000 upon its group of three great buildings and the exhibits contained in them. One entire building is devoted to Fisheries, while the Departments make very complete displays, and in addition, new exhibits from the Hawaiian and Philippine Islands, Tutuila, Guam, Porto Rico and Cuba, occupy the main building.



At the western end of the Esplanade, form a semicircular court. They are connected by conservatories in which are rare exhibits.



Contains exhibits of Machinery for cultivating the soil, harvesting and preserving crops, implements, machines, etc.



Height, 409 feet; main body of tower, 80 feet square; cascade, 70 feet; surmounted by statue, Goddess of Light. Contains restaurant and roof garden. Lighted by 40,000 electric lamps.



TRIUMPHAL BRIDGE.



MACHINERY, TRANSPORTATION AND ELECTRICITY BUILDINGS.



PIPE ORGAN—TEMPLE OF MUSIC.



INTERIOR TEMPLE OF MUSIC

Copyright 1900 by

PAN-AMERICAN EXPOSITION CO.



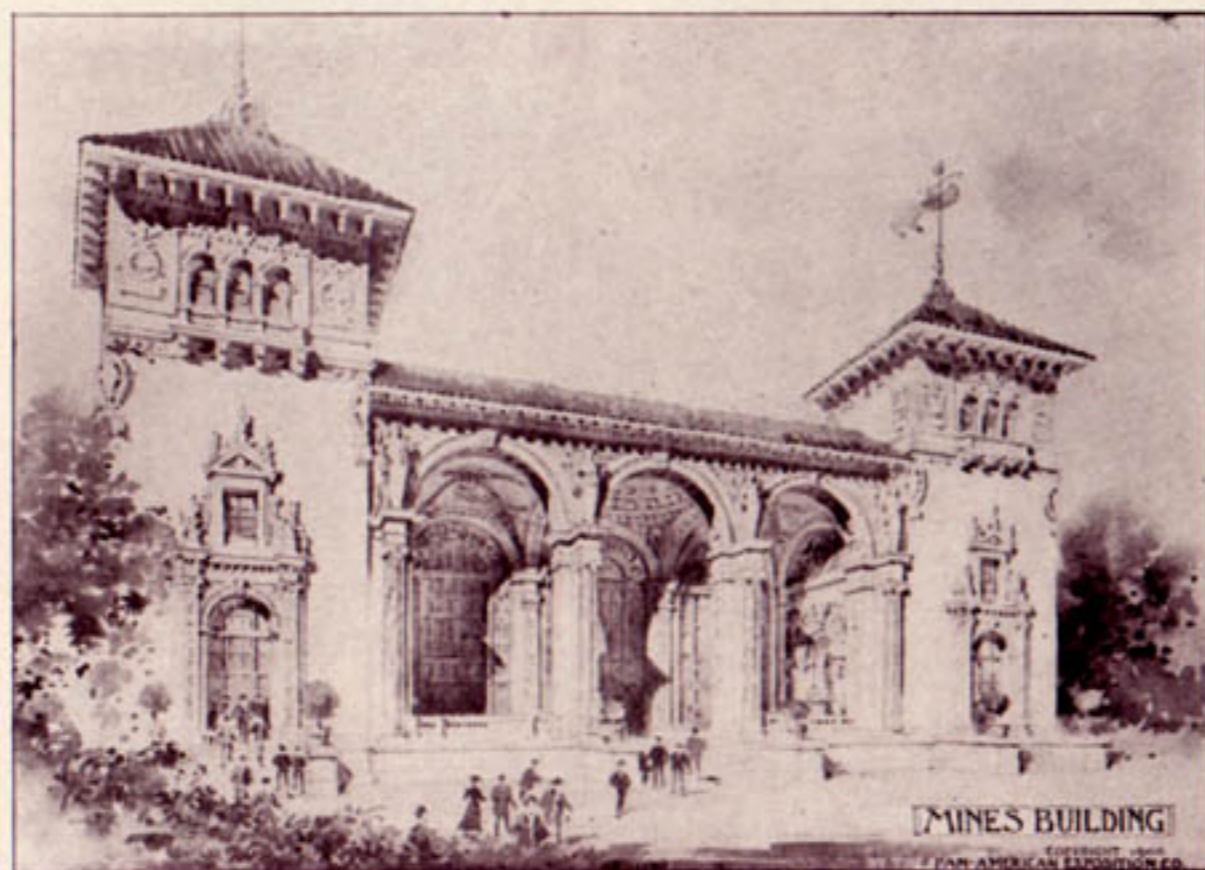
BAND STAND ON THE PLAZA.



Casino and Boathouse
PAN-AMERICAN EXPOSITION

COPYRIGHT 1900 BY THE PAN-AMERICAN EXPOSITION CO.

Property of the City of Buffalo ; contains Restaurant, Amusement and Lounging Rooms.



The building devoted to Mines is at the western end of the Plaza. It is 150 feet square, with four corner pavilions, having a height of 98 feet. The interior is richly ornamented. The exhibits contained within this building illustrate the progress of one of the most important industries.





The Albright Art Gallery, which will cost more than \$400,000, is to be a permanent building of white marble. This gift of Mr. J. J. Albright, a citizen of Buffalo, after serving the purposes of an Art Gallery for the Exposition, will become the permanent home of the public art treasures of Buffalo.



This is an architectural ornament of very beautiful and imposing design. The Propylæa is 500 feet long with a massive towered entrance at each end.



The Stadium seats 12,000 people. It contains a quarter-mile racing track and ample space for all the popular athletic games. Here also will be the displays of live stock, automobiles and other road vehicles, farm and road machinery in motion.



WOMEN'S BUILDING.



The Horticulture Building is a handsome one, its style of architecture being richly ornate and the coloring very effective. It is 220 feet square, with a dome and lantern rising to a height of 236 feet.



MRS HERMAN WATERMAN



MRS J.F. SCHOELLKOPF



MISS ANNIE DAMER



MRS GEORGE W. TOWNSEND



MRS CHAS. F. KINGSLEY



MRS ROBERT K. ROOT



MRS. TRACY C. BECKER

CHAIRMAN COMMITTEE ON APPLIED ARTS

Board of Women Managers

PAN-AMERICAN EXPOSITION

BUFFALO 1901



MRS. DAVID GRAY



MISS FRANCIS G. STANTON



MRS LESTER WHEELER



MRS. JOHN W. BUSH



MRS JOSEPH EGAVIN



Mrs. ELIZABETH B. MCGOWAN



MRS. Wm. A. ROGERS VICE-PRESIDENT



MRS. HERMAN MYNTER



MRS. WILLIAM JAMLIN PRESIDENT AND CHAIRMAN EXECUTIVE COMMITTEE



MISS MARIAN DE FOREST SECRETARY



MRS. ALFRED G. HAUENSTEIN CHAIRMAN COMMITTEE ON PUBLICITY AND PROMOTION

BOARD OF Women Managers

PAN AMERICAN EXPOSITION

BUFFALO 1901.



MRS. ADELBERT MOOT CHAIRMAN OF COMMITTEE ON CLUBS AND ORGANIZATIONS



DR. IDA C. BENDER Chairman Committee on Education



MRS. JOHN MILLER HORTON CHAIRMAN COMMITTEE ON ENTERTAINMENTS AND CEREMONIES



MRS. JOSEPH DESBECKER



MRS. CHARLES CARY Chairman committee on Fine Arts



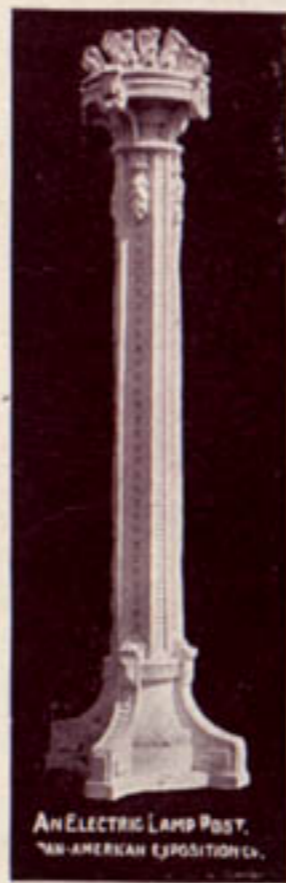
MRS. NORMAN E. MACK



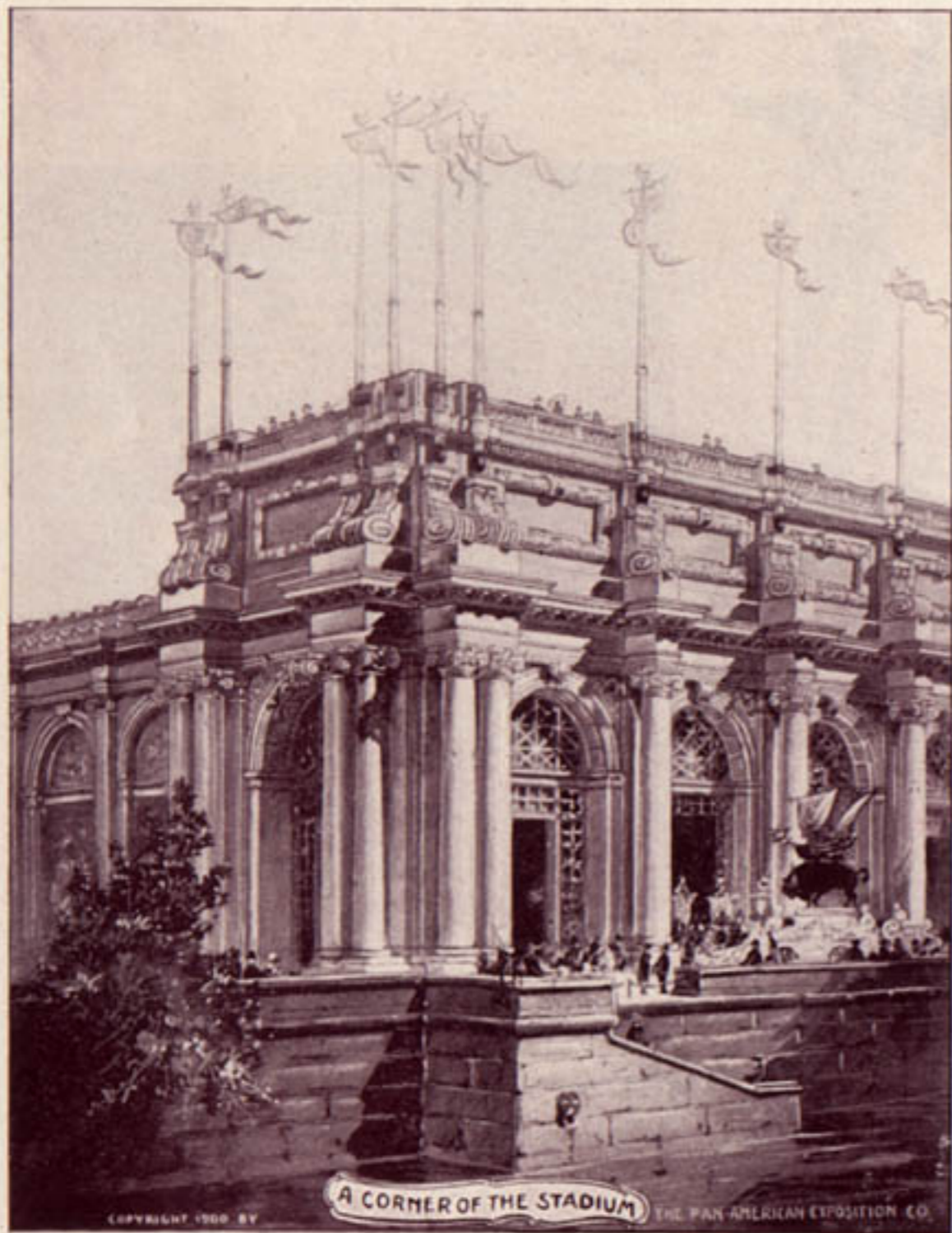
Equipped with up-to-date appliances, particularly regarding hygiene and sanitary matters.



TOWERS OF MACHINERY AND TRANSPORTATION BUILDINGS.



RELIGIOUS MUSIC. Temple of Music.
Isidore Konti.



This picture of a corner of the Stadium shows the massive and beautiful character of the architecture.



U. S. LIFE SAVING STATION.



THE PRESS BUILDING. Headquarters for all newspaper workers.



The New York State Building is to be a permanent edifice. The material of which it is constructed is white marble, and the style of architecture is that of a Doric Temple. At the close of the Exposition this magnificent structure will become the property of the Buffalo Historical Society. It will cost upwards of \$170,000—the State contributing \$100,000 of the \$300,000 appropriated by the Legislature, and the Historical Society and City of Buffalo contributing the balance.



GRANGE BUILDING.



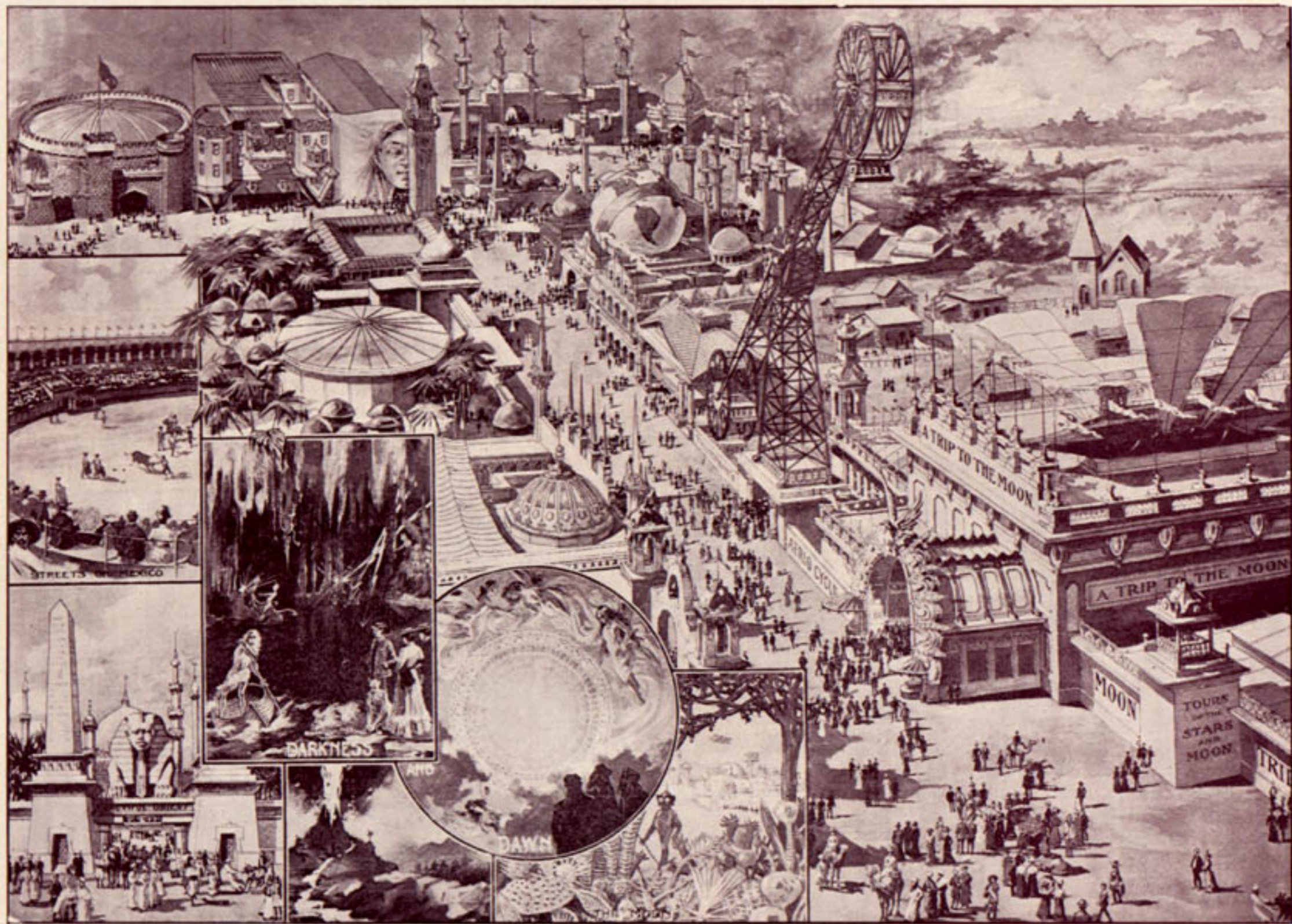
CANADA BUILDING.



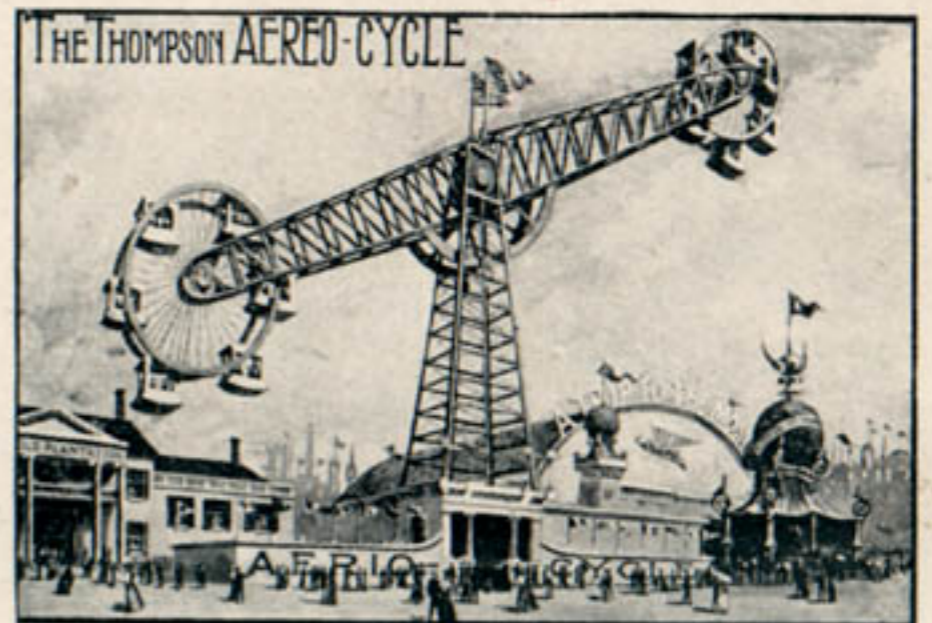
ILLINOIS STATE BUILDING.



CABIN OF SIX NATIONS.



GENERAL VIEW OF THE MIDWAY OR "LAUGHTER LANE."





BULL RING, Streets of Mexico.



THE OLD PLANTATION PAN-AMERICAN EXPOSITION MIDWAY



BOSTOCK AND HIS LIONS.



PHILIPPINE VILLAGE.



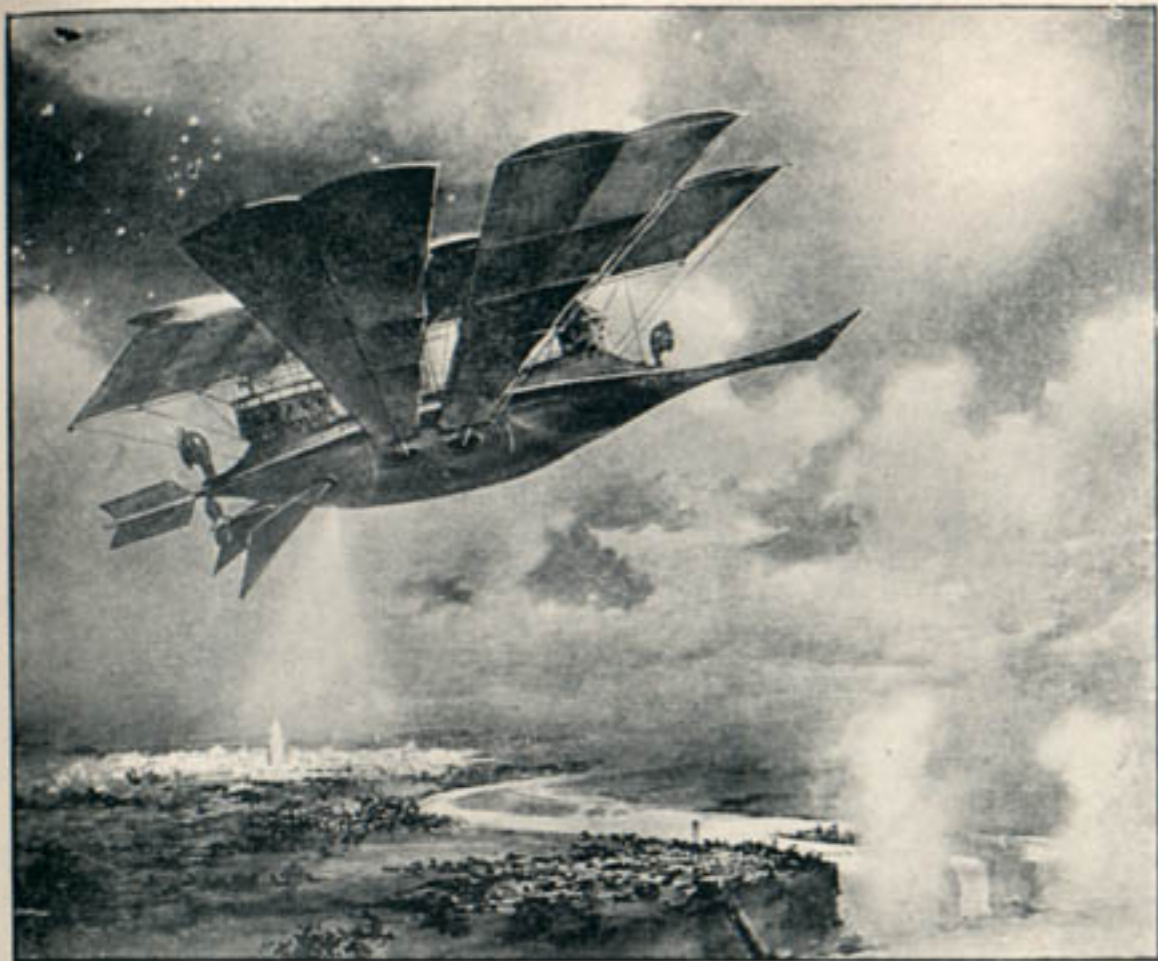
ENTRANCE TO INDIAN CONGRESS.



THE OLD PLANTATION



GYPSY CAMP.



A TRIP TO THE MOON.



BLACK BIRD
 HARD HEART LONE BEAR LAST HORSE BEAR FOOT
 BLACK BEAR JACK RED CLOUD LITTLE WOUND CONQUERING BEAR SHOT IN THE EYE

COPYRIGHT 1901
 HEYNS PHOTO CO. N. Y.

INDIAN CONGRESS, PAN-AMERICAN EXPOSITION 1901.



TESTING THE ELECTRIC ILLUMINATION ON THE MACHINERY BUILDING
PAN-AMERICAN EXPOSITION.



ETHNOLOGY BUILDING.



ENTRANCE TO FORECOURT. *Daniel C. French.*



ELECTRICITY BUILDING.



GOD PAN.



GENERAL VIEW FROM THE WEST. Taken from outside the grounds.





PATRIOTISM. Triumphant Causeway. *Gustave Gerlach.*



BIRTH OF ATHENE. Grand Basin. *Michel Tonett.*



LAKE ERIE.
Electric Tower. *Ralph Goddard.*



FOUNTAIN OF CERES.
Western Esplanade. *F. E. Elwell.*



HEROIC MUSIC.
Temple of Music. *Isidore Konti.*



FOUNTAIN OF MAN. *Charles Grafty.*



LIBERTY. *John Gilbert.*





ELECTRICITY BUILDING ILLUMINATED PAN-AMERICAN EXPOSITION CO.

TESTING THE ELECTRIC ILLUMINATION.



FOUNTAIN OF NATURE.
Geo. T. Brewster.





THE HORSE TRAINER. *F. G. Roth.*



MINERAL WEALTH. *Chas. H. Nicholas.*



FOUNTAIN OF KRONOS. Western Esplanade. *F. E. Elwell.*



GODDESS OF LIGHT. Electric Tower.



LAKE ERIE.



BUFFALOS RESTING

