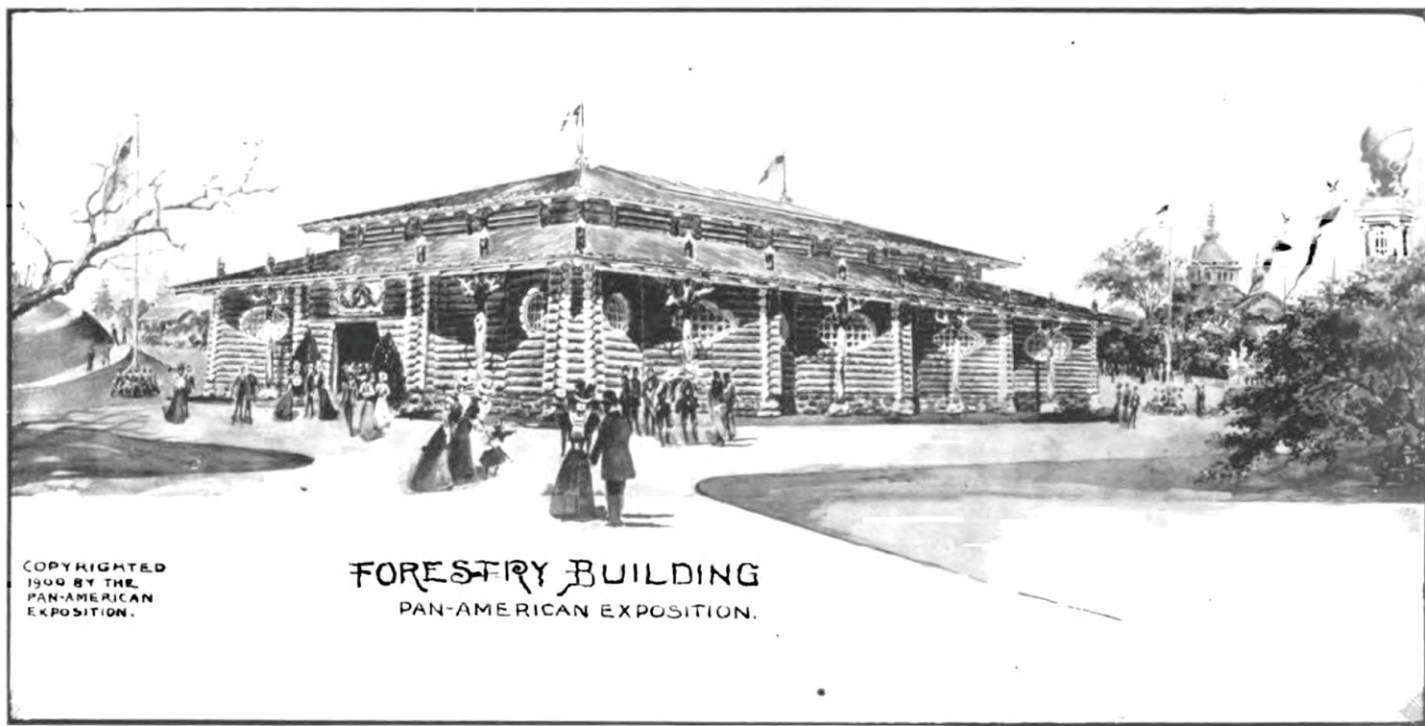


Timber Talk.

The Forestry Building is of rough construction, the exterior resembling a great log house, and the roof is made of bark slabs. The building was designed by W. W. Bosworth and is situated southeast of the Government Buildings, near the Grand Canal. Its nearest neighbors are the log and bark cabins, and the large stockade of the Six Nations Indian exhibit.

The Superintendent of Forestry Exhibits is Frederic W. Taylor, with Frederick DePuyster Townsend as assistant. The forestry exhibits include forestry, botany, literature and statistics, arboriculture, entomology as related to the combating of insects, collections and specimens illustrating forest products, timber, process of manipulation and preserving, including wood-pulp, bark, gum, resin and similar products of the forest, seeds and their preparation for use. Exhibits from Cuba and other tropical countries—rich woods, bark and



saps—practically arranged for the information of the public, are made a special feature. Photographs, samples and statistics of the lumber trade and of forestry as related to the devastation of forests, their care and management, from Pan-American countries, are shown. Prominent among the forestry exhibits are those from Michigan, Oregon and the Southern States. The United States Government also makes a very noteworthy exhibit of the woods of different parts of the country, showing the distribution of various species and the effect of the denudation of land of its forest growth.



Frederic W. Taylor.